

**Robert S. Moore Jr.**  
**Arkansas Highway Commissioner**



**Lake Village Chamber of Commerce**

**Tuesday, August 15, 2017**



1929  
Arkansas  
Highway and  
Department of  
Lands

1977  
Arkansas State  
Highway and  
Transportation  
Department

2017  
Arkansas  
Department of  
Transportation

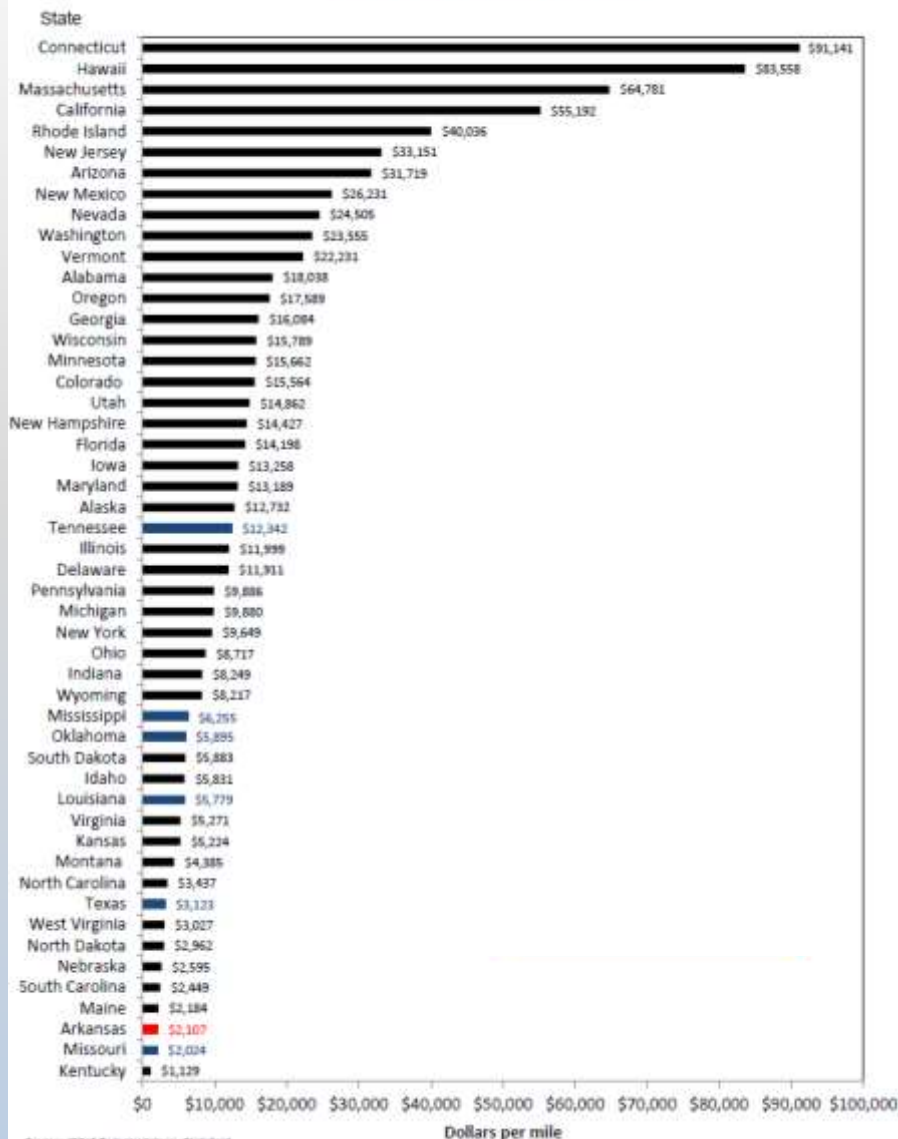
# New Name – New Identity

*Provide safe and **efficient** transportation solutions to support Arkansas' economy and enhance the quality of life for generations to come.*

**Adopted June 7, 2017**

## Administrative Cost Per Mile

Arkansas Ranks 48th in the Nation



Source: "2013 Federal Highway Statistics"  
Note: Excludes Toll Facilities

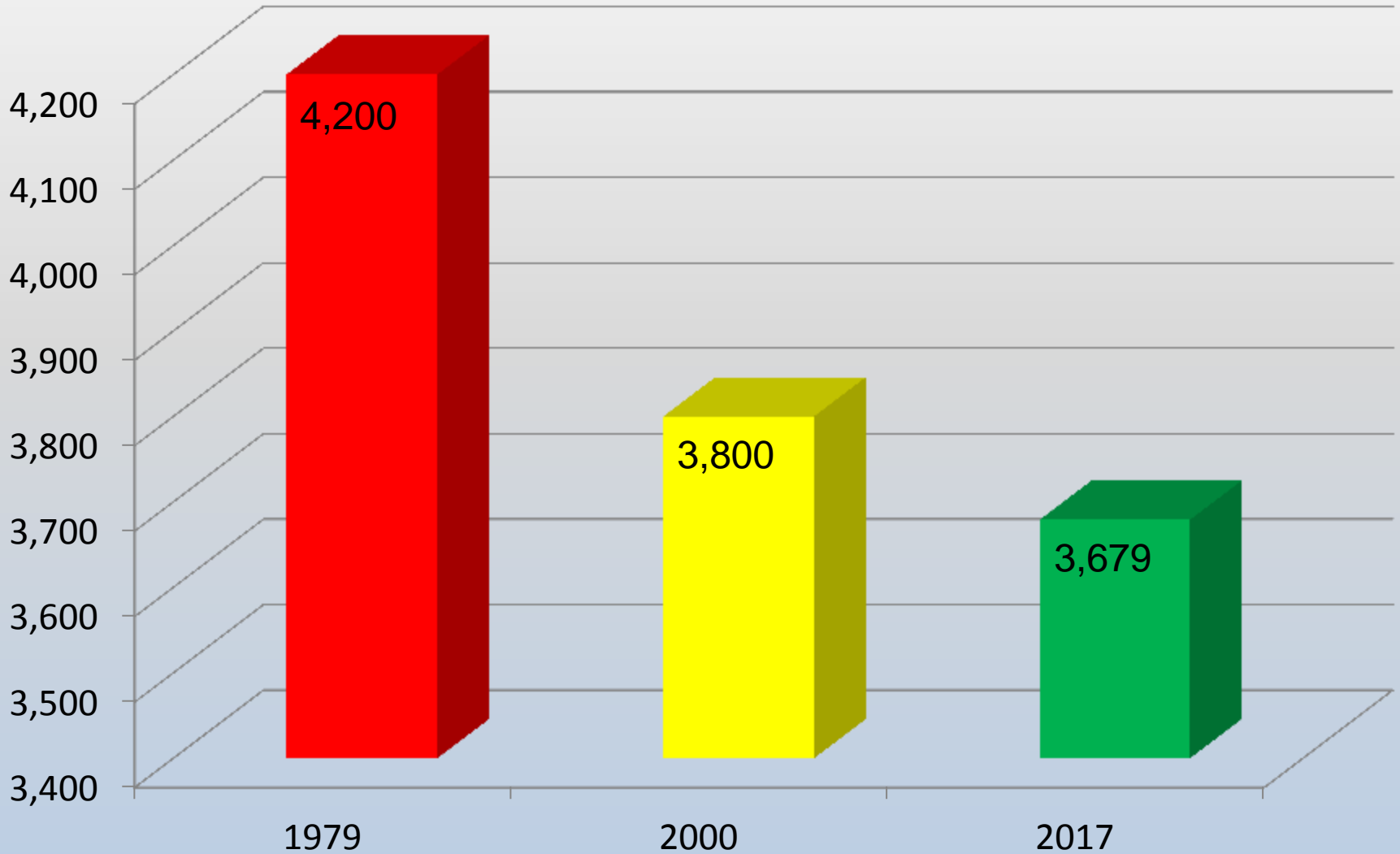
Arkansas = \$2,107

Surrounding States Average = \$4,334

National Average = \$9,224

Arkansas has the  
3<sup>rd</sup> Lowest  
Administrative Cost Per  
Mile  
in the Nation

## Department Employees



# Promises Made



# Promises Kept





Rebuilding Arkansas  
Interstates



IRP



CAP





# 1999 Interstate Rehabilitation Program



**50 Projects**  
**356 Miles**  
**\$973 Million**

---

**Prior to Program**  
**63% Poor or**  
**Mediocre**

**After Program**  
**72% Good**

## Completed

33 Projects  
212 Miles  
\$632 Million

## Under Construction

14 Projects  
91 Miles  
\$552 Million

## Scheduled

36 Projects  
191 Miles  
\$343 Million





## Completed

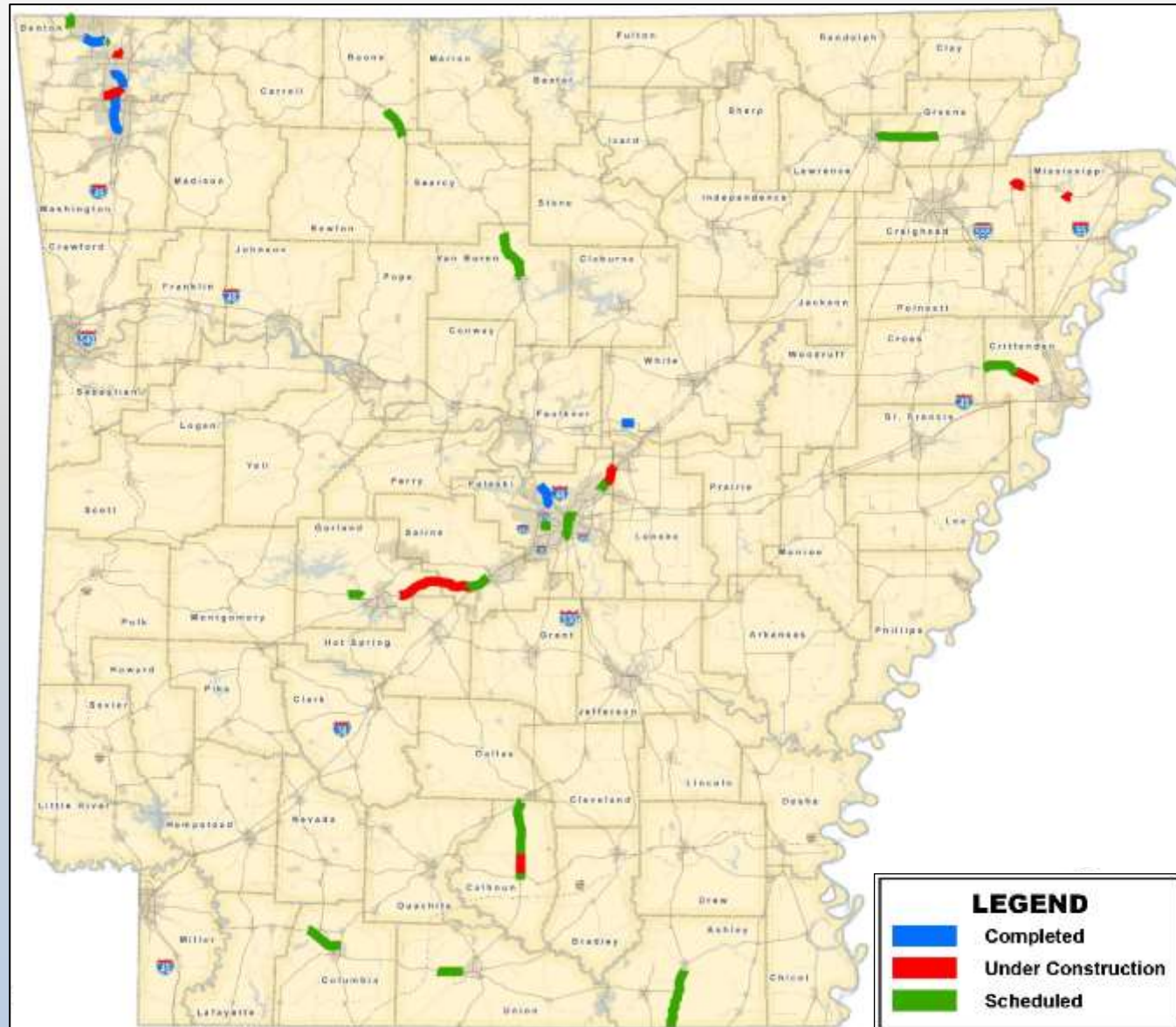
6 Projects  
27 Miles  
\$188 Million

## Under Construction

8 Projects  
45 Miles  
\$380 Million

## Scheduled

22 Projects  
113 Miles  
\$1.31 Billion



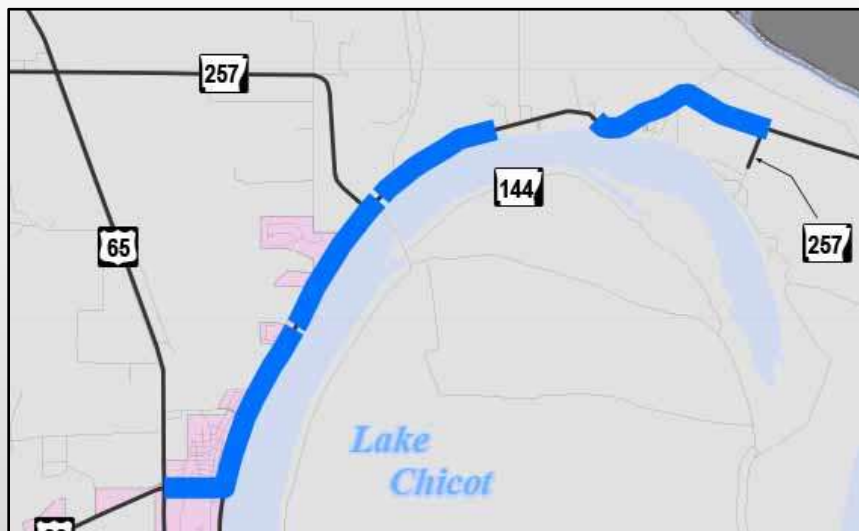
# Local Project



# Updates



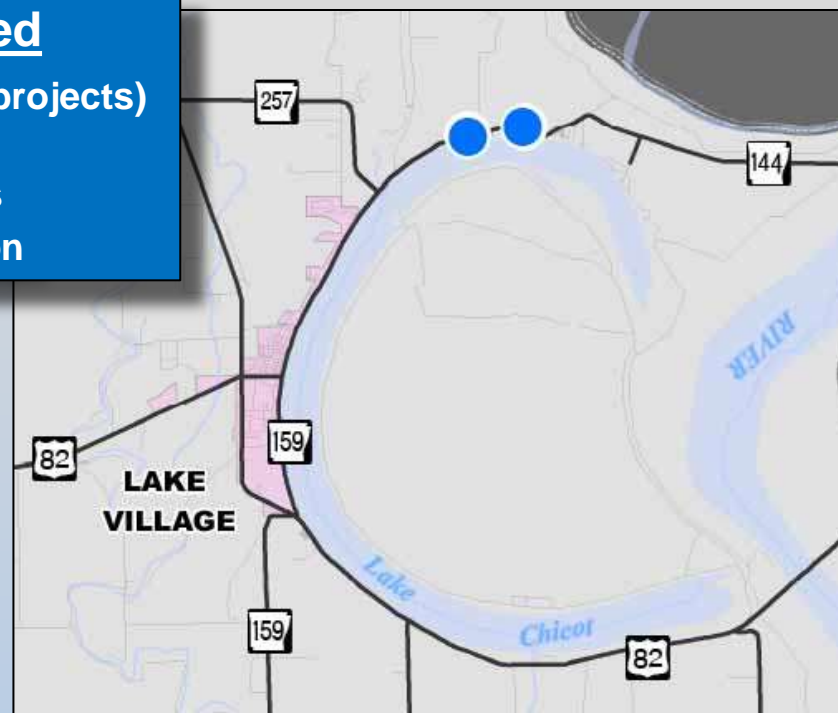
# Completed



## LAKE VILLAGE



**Completed**  
Rehabilitation (2 projects)  
7.3 Miles  
2 Bridges  
\$3.7 Million

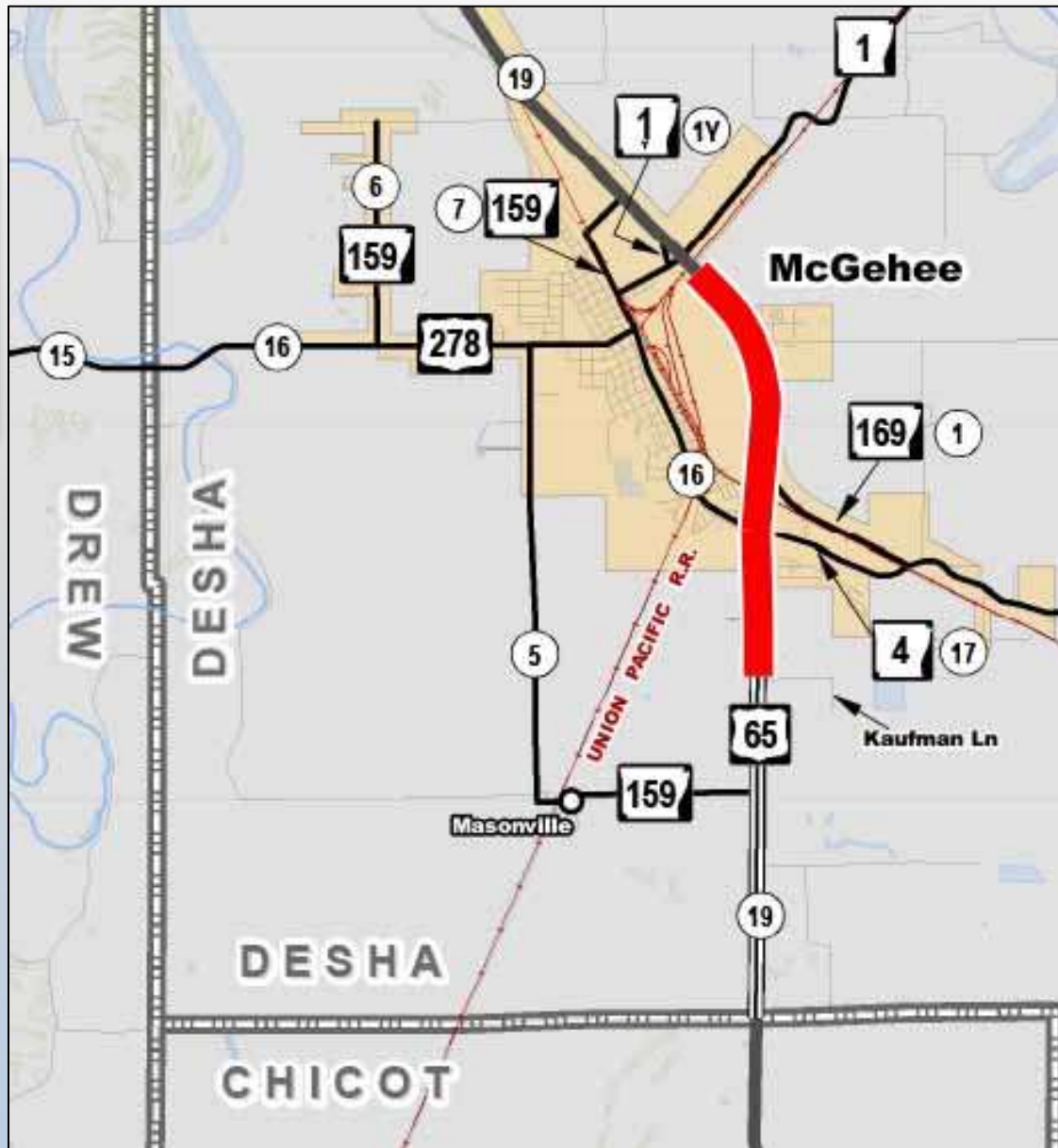


## Under Construction

Rehabilitation (1 project)

2.8 Miles

\$2.1 Million





# Scheduled – U.S. Highway 65



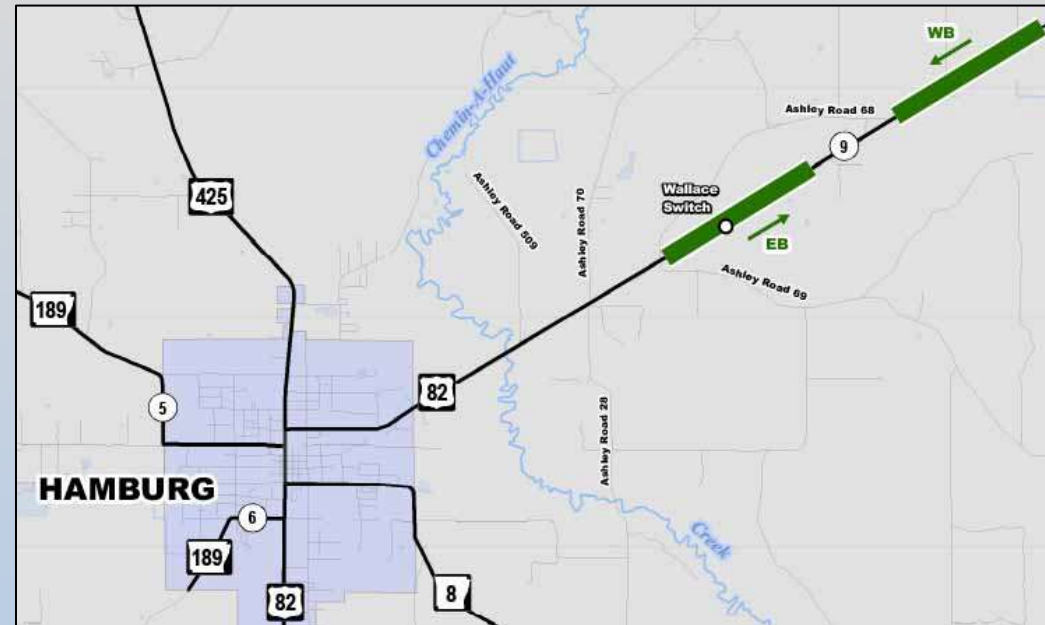
**Scheduled**  
Rehabilitation (2 projects)  
4.5 Miles / \$2-10 Million



# Scheduled – U.S. Highway 82



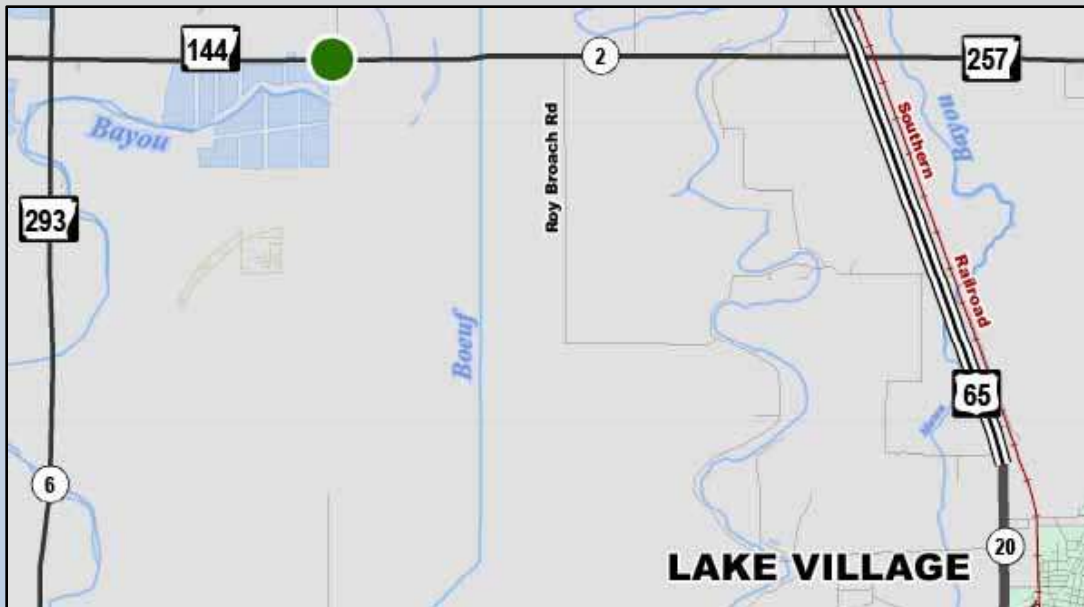
**Scheduled**  
Rehabilitation (2 projects)  
10 Miles & 6 Bridges  
\$6-15 Million



# Scheduled



**Scheduled**  
 Rehabilitation (3 projects)  
 7 Miles  
 2 Bridges  
 \$3-15 Million





# Highway Condition



# and Needs

# Summary of Needs – 10 Years

<b>NEEDS CATEGORY</b>	<b>COST (x \$1 M)</b>
<b>System Preservation</b>	
Pavement	\$ 3,438
Bridges	\$ 1,238
<b>Capacity</b>	\$ 3,236
<b>Safety</b>	\$ 787
<b>Maintenance</b>	
Equipment	\$ 202
Facilities	\$ 70
ITS	\$ 30
<b>TOTAL</b>	<b>\$ 9,001</b>

# Summary: Needs vs Revenue – 10 Years

2016 Dollars

	AMOUNT (x \$1 M)
<b>ESTIMATED REVENUE<sup>(1)</sup></b> Federal-aid + State	\$4,415
<b>TOTAL NEEDS<sup>(2)</sup></b> Pavement, Bridges, Capacity, Safety, Equipment, Facilities, ITS	\$9,001
<b>SHORTFALL</b>	<b>\$4,586</b>

(1) Revenue Not Currently Dedicated to Routine Maintenance, Administration and Operations

(2) Does Not Include Economic Development Connectors or Congressionally-Designated High Priority Corridors



# Challenges

➤ **12<sup>th</sup>** largest system in the country

➤ **42<sup>nd</sup>** in highway revenue per mile.

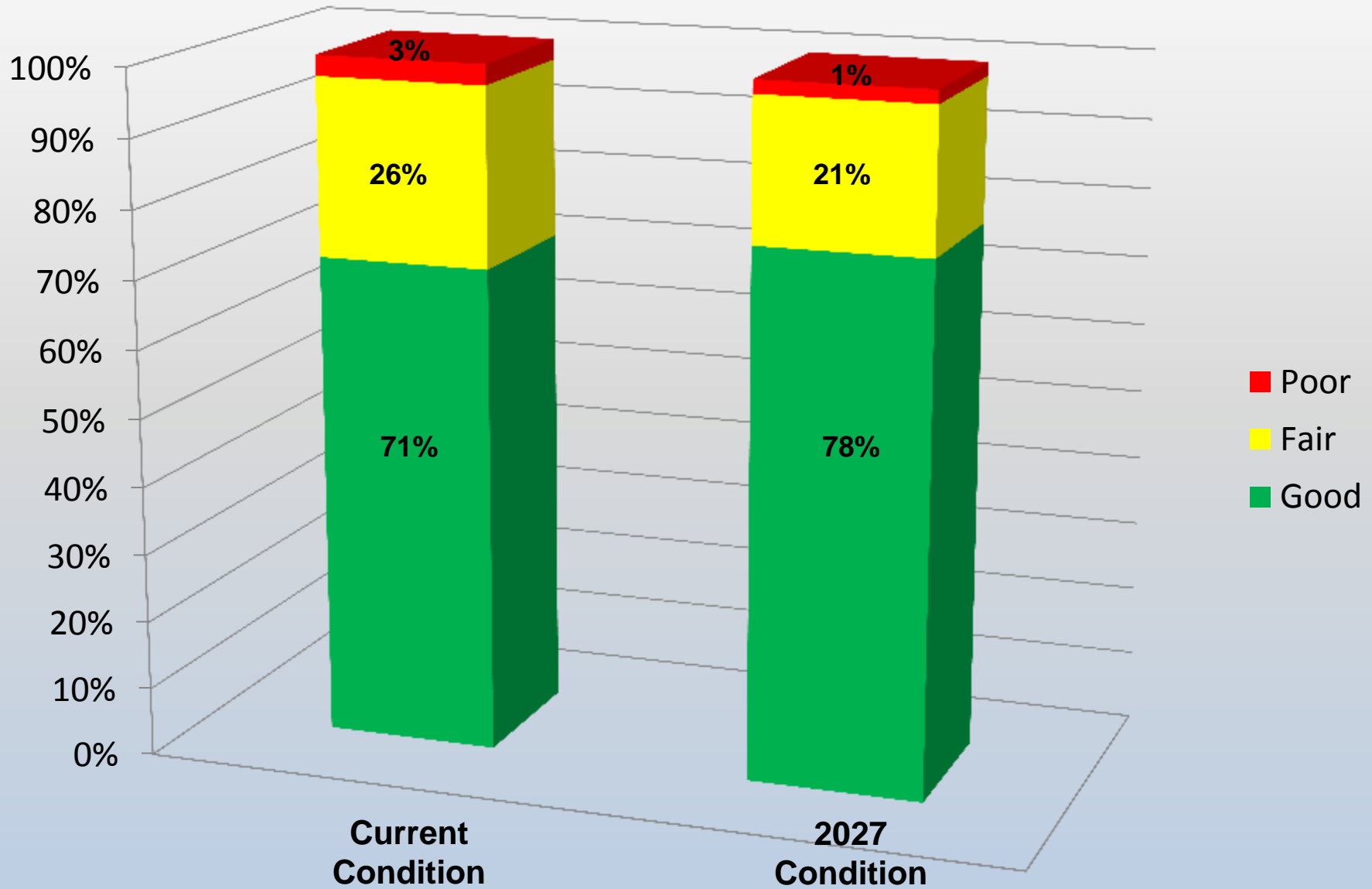
---

➤ **\$9 billion** in needs

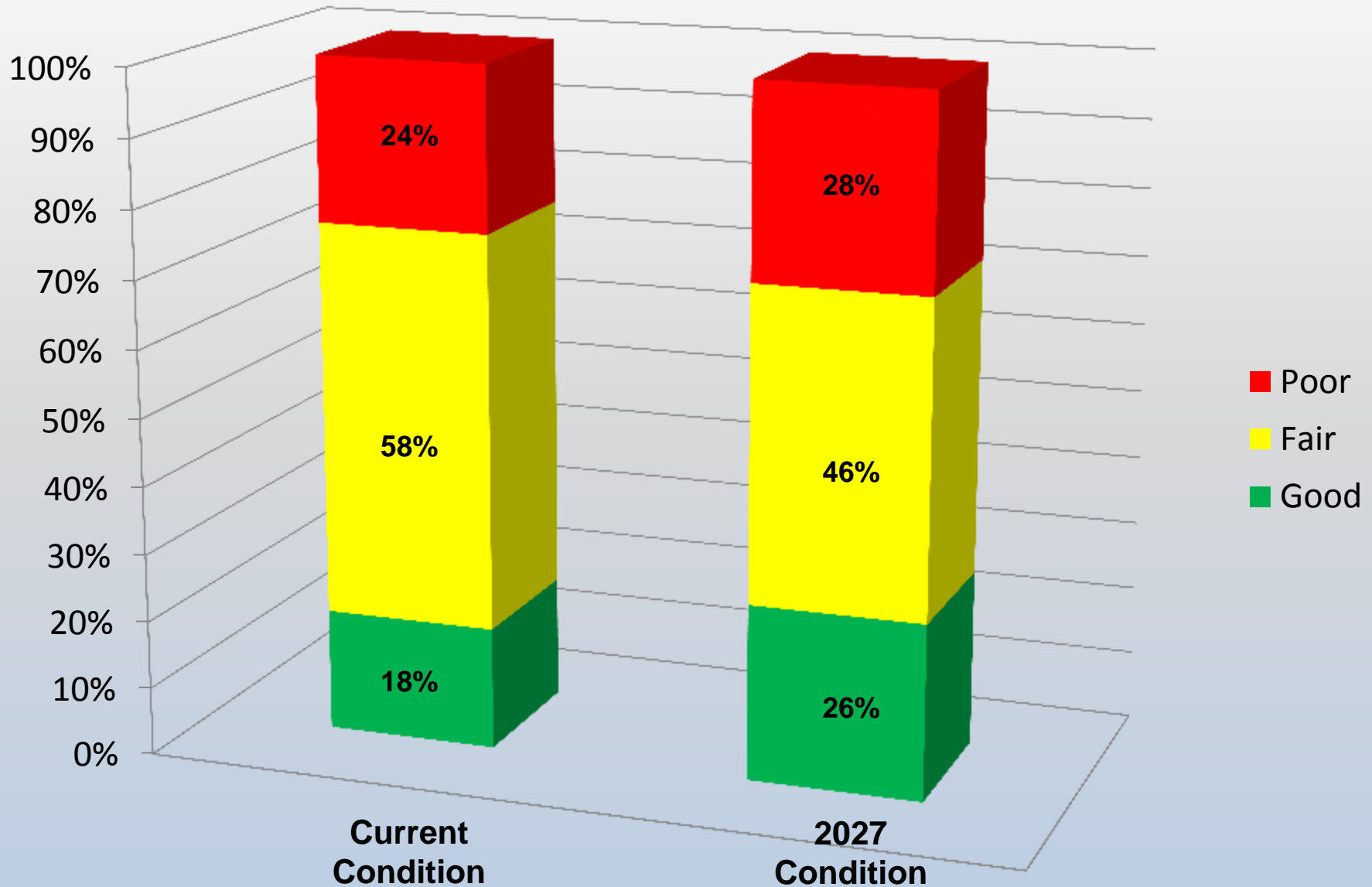
➤ **\$4.4 billion** in available revenue



# Interstates



# All State Highways – Including Interstates



Chicot County  
Highway 144, Section 2  
Log mile 4.95 - 7.87  
4 miles northeast of Lake  
Village







Chicot County  
Highway 144, Section 3  
Log mile 7.83 - 10.86  
Lake Chicot State Park  
entrance to the Mississippi  
River Levee

Chicot County  
Highway 8, Section 17  
Log mile 0.0 - 9.72  
Loop around Grand Lake





## THEN

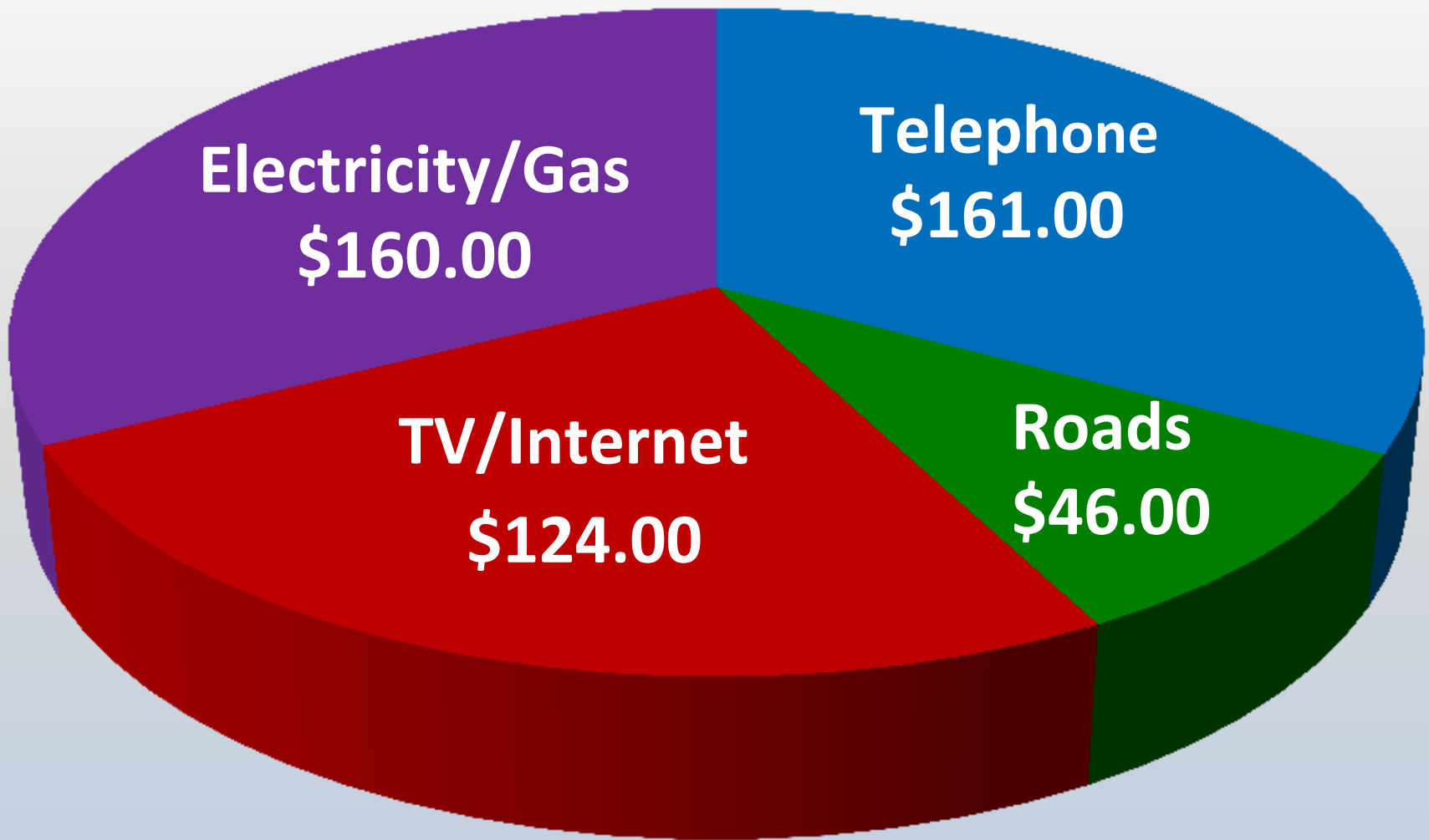
22 years ago, in 1995,  
**200 miles** of Highway  
could be overlaid.

## NOW

As of 2015, using the  
same resources, only  
**54 miles** of Highway  
could be overlaid.



# Average Monthly Household Expenditures



# Where

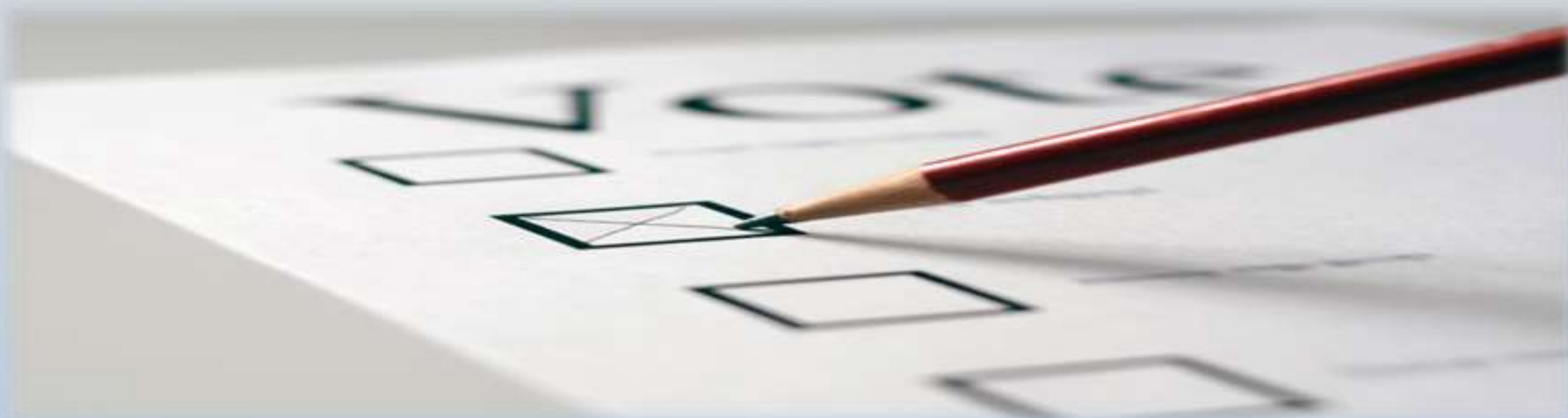


# Are We Going?

## □ Governor’s Highway Funding Working Group

- ✓ Immediate: \$ 50 Million
- ✓ Short-term (0-3 years): \$110 Million
- ✓ Mid-term (3-5 years): \$250 Million
- ✓ Long-term (6-9 years): \$400 Million

All figures are annual amounts for state highways.



"As to the long-term solutions, it emphasizes that it is difficult to get a referral of this General Assembly out to the voters, and that I hope the leadership of our state and the business community and others **will look at an initiated act that might go on the ballot for a highway program,**" he said. "Otherwise, we'll continue to debate the long-term solution in future sessions."

Governor Asa Hutchinson



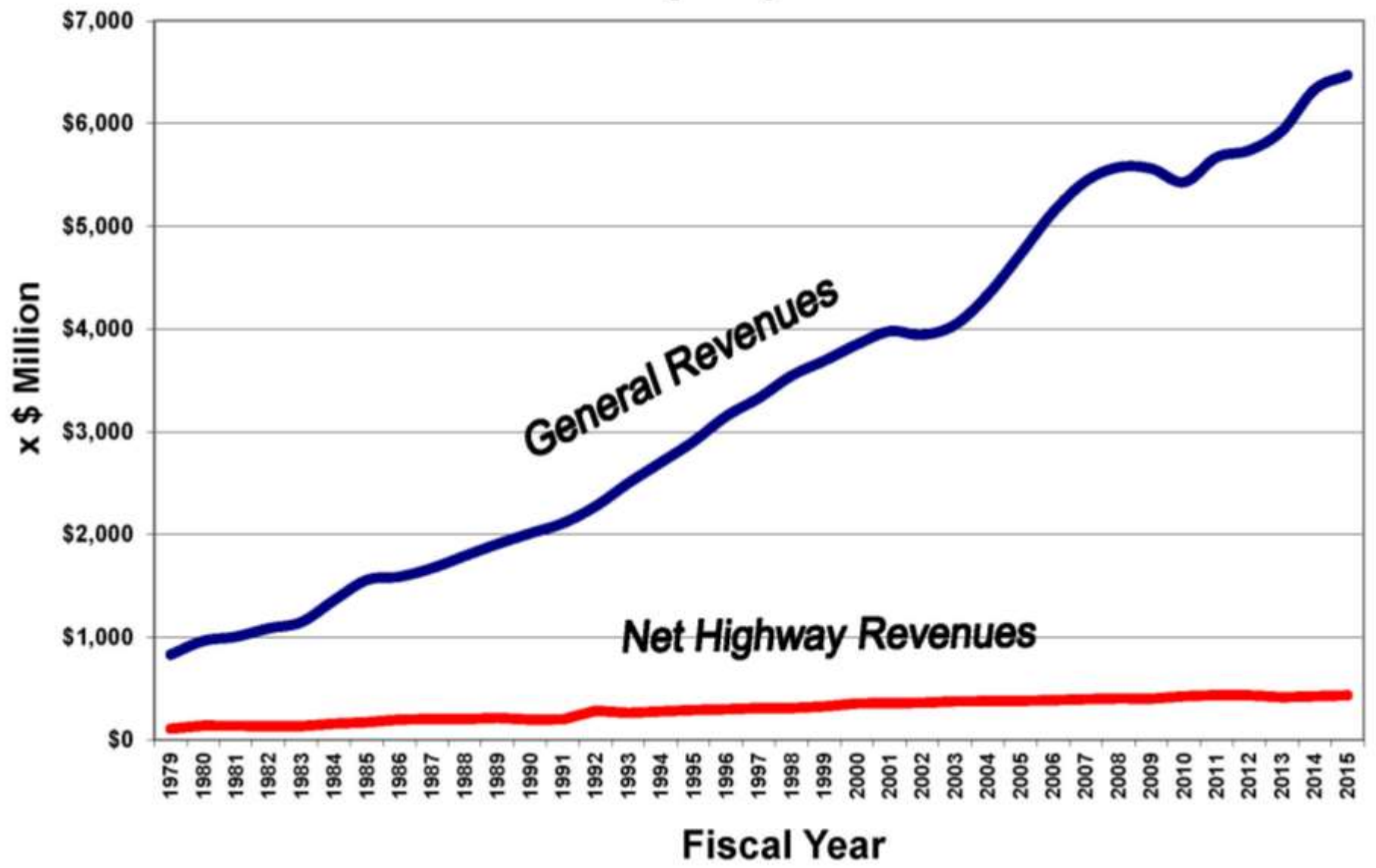
Source	Highway Revenue <sup>1</sup>
1 Cent Motor Fuel Tax Increase	\$ 14 M
Remove Sales Tax Exemption (Wholesale \$1.70 per Gallon) <sup>2</sup>	\$ 108 M
6.5% Sales Tax (Wholesale \$1.70 per Gallon)	\$ 156 M
\$10 Registration Fee Increase (Cars and Pickups)	\$ 19 M
Transfer Sales Tax on New and Used Vehicles <sup>2</sup>	\$ 228 M
Transfer Sales Tax on Auto Repair Parts, Services, etc. <sup>2</sup>	\$ 74 M
1% General Sales Tax	\$ 344 M

<sup>1</sup> Amount shown is annual net to highways – after deduction for CFA/CSF and 30% to cities and counties.

<sup>2</sup> Transfer of 4.5% (“general” portion of statewide sales tax)



# Arkansas State General Revenues vs AHTD Net Highway Revenues



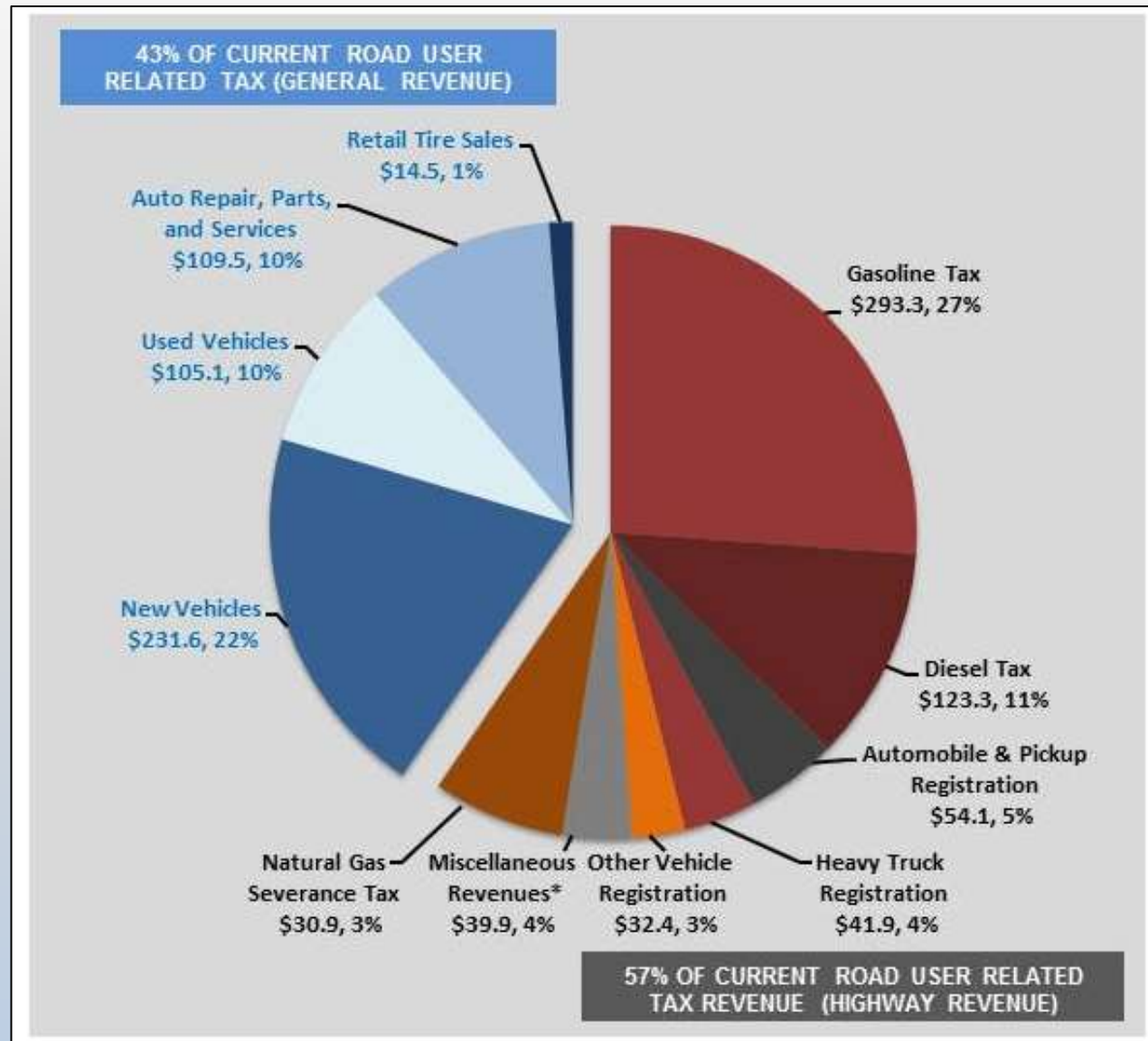
# Road User Related Tax Revenue (SFY 2016)

**Total Road User Revenue**  
**\$1,076.5 Million**

**Distribution:**

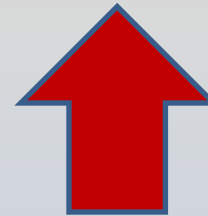
**General Revenue**  
**\$460.7 Million (43%)**

**Highway Revenue**  
**\$615.9 Million (57%)**





**Costs**



**Revenue**



## CITIZENS OPINION SURVEY ON HIGHWAYS IN ARKANSAS

MAIL OR EMAIL RESPONSES TO:  
 ARDOT  
 Public Information  
 P.O. Box 2261  
 Little Rock, AR 72203  
[info@arkansashighways.com](mailto:info@arkansashighways.com)

Are you satisfied with the condition of the existing state highway system?

Yes     No

What highways in your area need improvements, and what type of improvements do they need?

Priority 1: \_\_\_\_\_  
 Priority 2: \_\_\_\_\_  
 Priority 3: \_\_\_\_\_  
 Priority 4: \_\_\_\_\_

If you want better highway conditions, the Arkansas Department of Transportation will need additional funds. Would you support a new highway program that would generate additional revenue?

Yes     No

Which of the following sources do you recommend be utilized in obtaining additional funds (check all that apply):

- Increase in gas tax
- Increase in diesel tax
- Increase in sales tax (dedicated to highways)
- Increase in vehicle registration fees
- Add sales tax on wholesale price of motor fuels
- Transfer existing sales and use tax on motor vehicles and related parts and service (currently collected but not paid to highways)
- Other (please specify):

\_\_\_\_\_  
 \_\_\_\_\_

Would you be willing to sign a petition to put a highway revenue proposal on the 2018 general election ballot?

Yes     No    If Yes, what County do you live in? \_\_\_\_\_

(Optional) Contact Information: name, email, etc.

\_\_\_\_\_  
 \_\_\_\_\_

meeting name - date

Online Form Available Here:

[www.Arkansashighways.com](http://www.Arkansashighways.com)





- ARDOT.gov
- ConnectingArkansasProgram.com
- Vimeo.com/myARDOT
- IDriveArkansas.com
- Twitter.com @myARDOT



@myARDOT



# Questions?

